

Featherwing Beetle

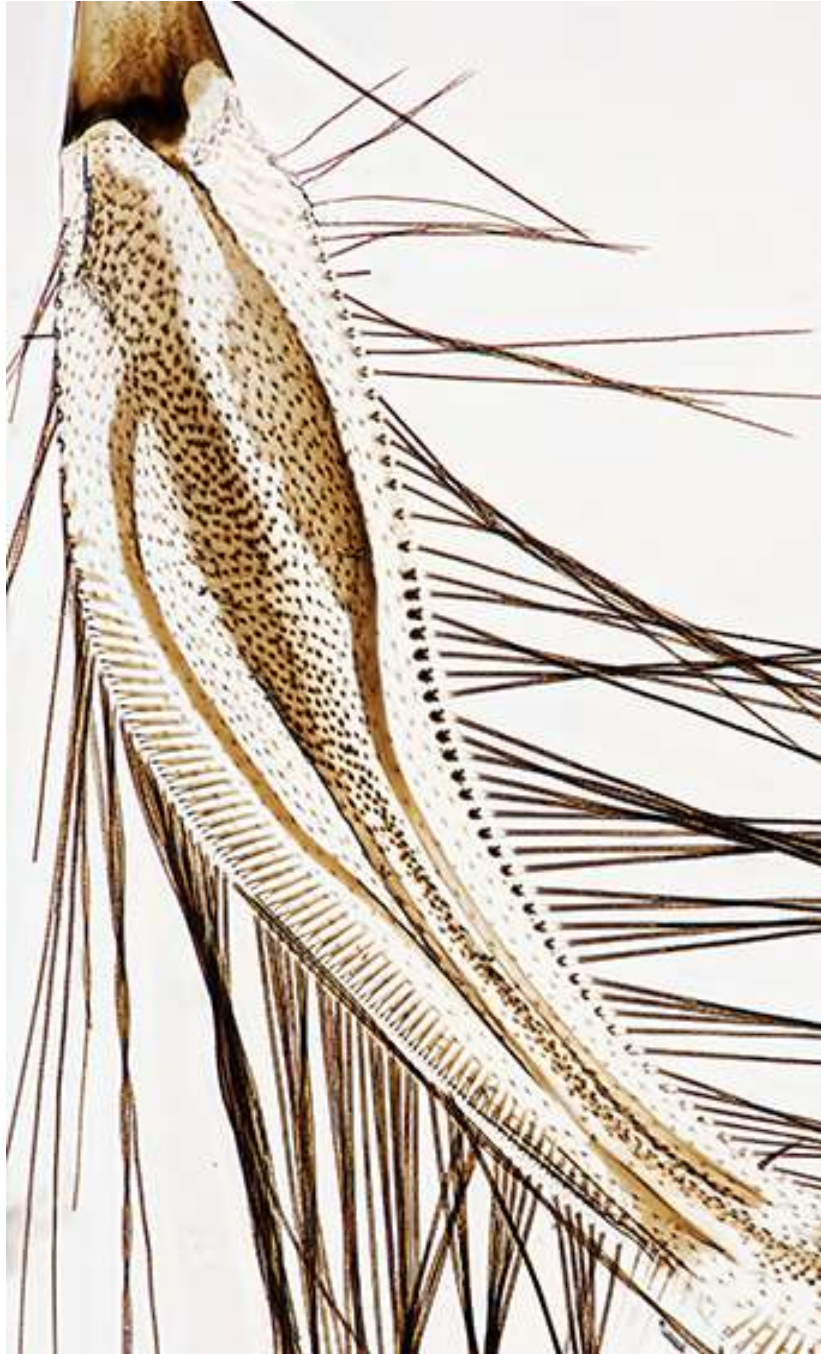
This tiny beetle, length 1.40 mm, was extracted from forest leaf litter. Outwardly just another beetle! But, its hind wings (the term true but somewhat a misnomer) were extending beyond the elytra (hardened forewings). These demanded further investigation. I had no idea which family this beetle belonged to, a post on BugGuide got an answer in 9 minutes – a Featherwing Beetle, Family: Ptiliidae.

To get a decent image of these hindwings I had to be quite brutal and ended up damaging the beetle.

Various magnifications of the hind wing(s); final images with 20x objective







left and above: Olympus 20x Splan Apo; 1.25 intermediate tube + 2,5x projection eyepiece



length of dark (brown) shaft = 0.16 mm

crop of above image

Comments to the author Anthony Thomas are welcomed, email - at5535587 AT gmail DOT com.

Published in the October 2023 issue of *Micscape* magazine.

www.micscape.org